

EAST STREET, BARKING

£1,325 Per Calendar Month

2 Bed Flat



Features:

- Two Bedroom Flat
- Split Over Two Floors
- Spacious
- Located on East Street
- Available Immediately
- Permit Parking Only
- 12 Months Minimum Tenancy
- Holding Deposit: equivalent to one week's rent capped at £400

A substantially spacious two bedroom split level apartment, set above a pedestrianised stretch of East Street in Barking. Barking tube and overground station is just three minutes away, and your reception totals an impressive 270 square feet.

Among the exceptional connections of the area are East London's growing network of bike paths. Starting just around the corner, you can cycle almost seamlessly all the way to the City.

REQUEST A VIEWING

0203 397 2222

E11, E7, E12 & E15
hello11@stowbrothers.com
0203 397 2222

E4 & N17
hello4@stowbrothers.com
0203 369 6444

E17 & E10
hello17@stowbrothers.com
0203 397 9797

E18 & IG8
hello18@stowbrothers.com
0203 369 1818

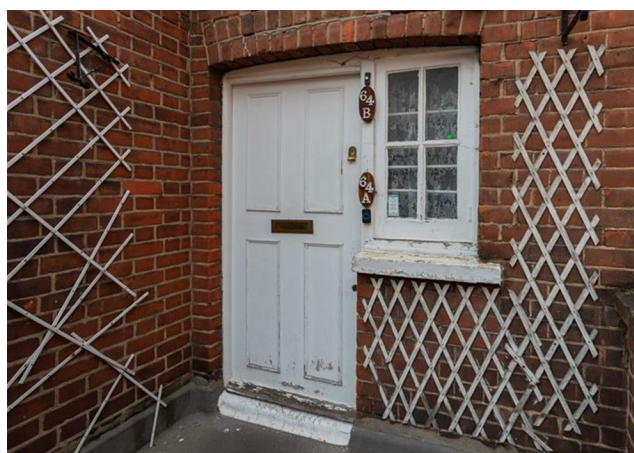
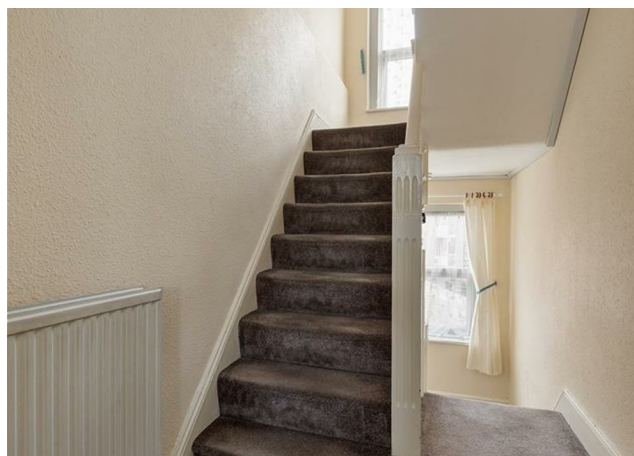
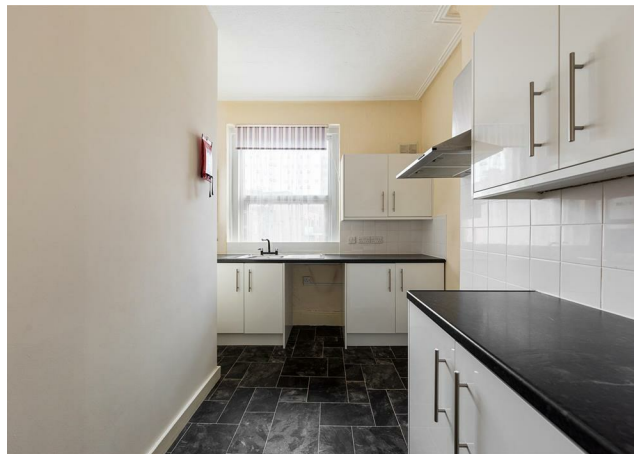
E8, E9, E5, N16, E3 & E2
hellohackney@stowbrothers.com
0208 520 3077

New Homes
newhomes@stowbrothers.com
0203 325 7227

Investment & Development
id@stowbrothers.com
0208 520 6220

Property Maintenance
propertymanagement@stowbrothers.com
0203 325 7228

STOWBROTHERS.COM
@STOWBROTHERS



IF YOU LIVED HERE...

Climb the stairs and that substantial lounge is straight ahead, 270 square feet with a triple set of broad curvaceous windows filling the entire space with natural light. Soft grey carpet and simple cream walls complete the decor. A superb social space. Across the hall is your bathroom, finished in smoky grey flooring, white tilework and a shower over the tub.

Next door your smartly arranged kitchen is decked out in a suite of white cabinets, with more smoky grey floor tiling and complementary quartz style countertops.

Upstairs now for the sleeping arrangements, including an incredibly generous, 250 square foot principal bedroom, plenty of space for a home working nook. Bedroom two is another solid double.

Outside and, as noted, you're just three minutes on foot from Barking station, for the District and Hammersmith & City line. The latter will get you to Liverpool Street in just twenty minutes for a door to door City commute of around a half hour. You can also hop on the newly christened Suffragette overground line here, for direct connections to Fenchurch Street and Southend.



WHAT ELSE?

- The wide open greenery of Barking Park is less than a half mile away on foot, home to tennis courts, a splash park and the Magical Unicorn Lake, where you can hire pedalos with unicorn faces, to delight the young and young at heart.
- For your new local, why not try The Acorn just the other side of the park, a much loved gastropub with craft ales, cocktails and a diverse menu.
- Barking Street Market is on your doorstep. This historic street market dates back to 1175. If you can't buy it here you probably don't really need it.

REQUEST A VIEWING
0203 397 2222

FOLLOW US ➡ @STOWBROTHERS
STOWBROTHERS.COM